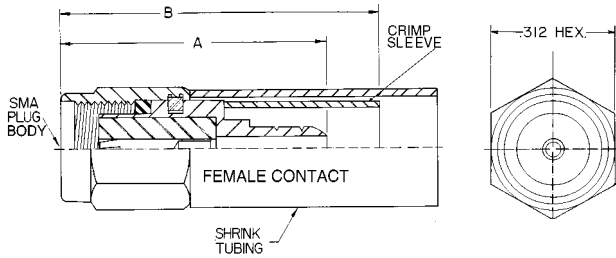
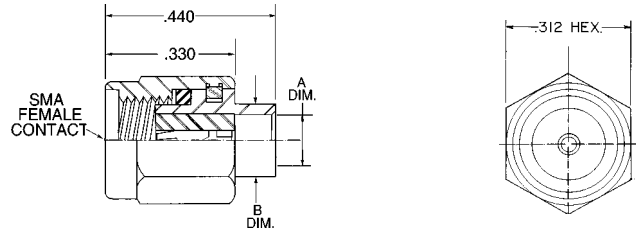


Reverse Polarity SMA Connectors Per FCC Part 15.203 Requirement



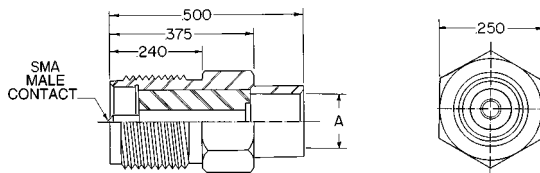
PART NO.	CABLE	A DIM.	B DIM.
352-1 PZ	RG-55/U, 142, 223, 400	.690	.945
352-2 PZ	RG-58/U 141, 303	.690	.945
352-3 PZ	RG-174/U, 179 187, 188, 316	.655	.815

POLARIZED 352 PZ
MALE BODY
FEMALE CONTACT
FLEXIBLE CABLE



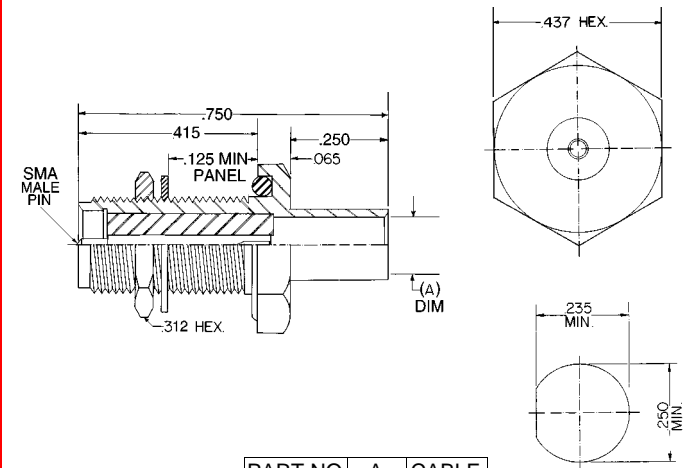
PART NO	A	B	CABLE
300-7 PZ	.143	.187	141
301-1 PZ	.087	.120	085
301-3 PZ	.049	.120	047

POLARIZED 301 PZ
POLARIZED SEMI RIGID
MALE BODY
FEMALE CONTACT



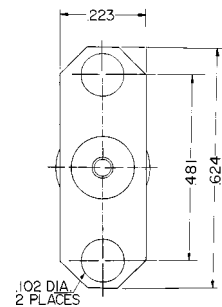
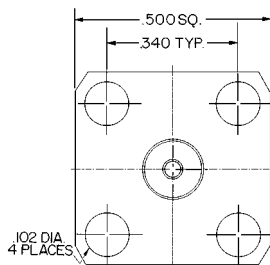
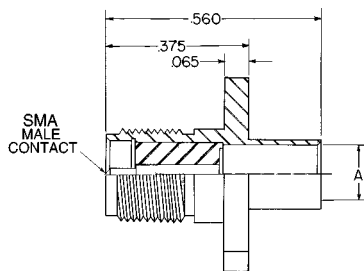
PART NO	A	CABLE
302 PZ	.143	.141
302-1 PZ	.088	.085
302-2 PZ	.049	.047

POLARIZED 302 PZ SMA
FEMALE BODY MALE CONTACT



PART NO	A	CABLE
304 PZ	.143	.141
304-1 PZ	.0875	.085

POLARIZED 304 PZ
FEMALE BODY
MALE CONTACT



PART NO	A	CABLE
303 PZ	.143	.141
303-1 PZ	.0875	.085
303-2 PZ	.048	.047
307 PZ	.143	.141
307-1 PZ	.0875	.085
307-2 PZ	.048	.047

POLARIZED 303 PZ 4 HOLE SMA FLANGE
POLARIZED 307 PZ 2 HOLE SMA FLANGE
FEMALE BODY MALE CONTACT